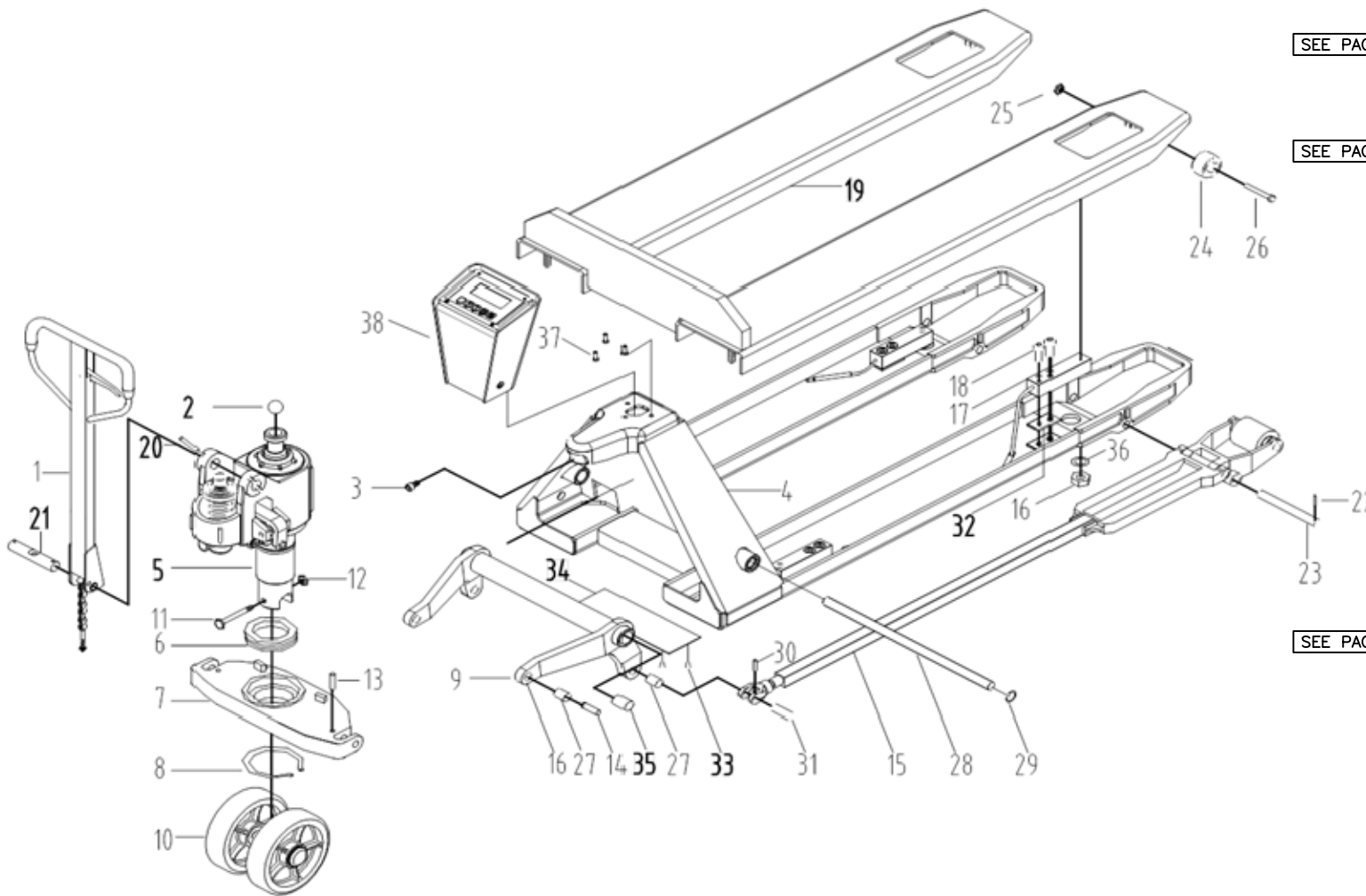


274720

GENERAL ASSEMBLY



| REPLACEMENT PARTS LIST | | | | |
|------------------------|------|----------|-----------------------------------|------|
| | ITEM | PART NO. | DESCRIPTION | QTY. |
| SEE PAGE 2 | 1 | XXXXXX | HANDLE ASSEMBLY | 1 |
| | 2 | | STEEL BALL 3/4 | 1 |
| | 3 | | SCREW M6X12 | 3 |
| | 4 | | TRUCK FRAME ASSY | 1 |
| SEE PAGE 4 | 5 | | PUMP ASSY | 1 |
| | 6 | | THRUST BALL BEARING 51111 | 1 |
| | 7 | | SUPPORT BASE | 1 |
| | 8 | | CIRCLIP FOR SHAFT A-55 | 1 |
| | 9 | | ROCKER ARM ASSY | 1 |
| SEE PAGE 7 | 10 | | WHEEL ASSY | 1 |
| | 11 | | BOLT M8X60 | 1 |
| | 12 | | NUT | 1 |
| | 13 | | CYLINDRICAL PIN 5X35 | 2 |
| | 14 | | PIN SHAFT | 2 |
| SEE PAGE 5 | 15 | | CONNECTING ROD AND WHEEL CARRIAGE | 2 |
| | 16 | | NUT M10 | 4 |
| | 17 | | PRESSURE SENSOR | 4 |
| | 18 | | SCREW M12X30 | 8 |
| | 19 | | SCALE ASSY | 1 |
| | 20 | | CYLINDRICAL PIN 5X35 | 2 |
| | 21 | | PIN SHAFT WITH HOLE | 1 |
| | 22 | | CYLINDRICAL PIN 5X22 | 4 |
| | 23 | | PIN SHAFT WITH HOLE | 2 |
| | 24 | | WHEEL | 2 |
| | 25 | | NUT M6 | 2 |
| | 26 | | BOLT M6X55 | 2 |
| | 27 | | BUSH SF-1-16.15 | 4 |
| | 28 | | PIN SHAFT | 1 |
| | 29 | | CIRCLIP FOR HOLE A-25 | 2 |
| | 30 | | CYLINDRICAL PIN 5X28 | 2 |
| | 31 | | PIN SHAFT WITH HOLE | 2 |
| | 32 | | BLOCK | 4 |
| | 33 | | SCREW M6x10 | 6 |
| | 34 | | COVER PLATE | 1 |
| | 35 | | BUSH SF-1-25.30 | 2 |
| | 36 | | RUBBER PAD | 4 |
| | 37 | | SCREW M6X16 | 3 |
| SEE PAGE 8 | 38 | | SCALE ASSEMBLY | 1 |

THIS DRAWING IN ALL PARTICULARS IS WESCO INDUSTRIAL PRODUCTS, LLC PROPERTY. ALL RIGHTS OF DESIGN, INVENTION OR USE OF ARE RESERVED.

PRINT ISSUED

AUG. 26, 2020

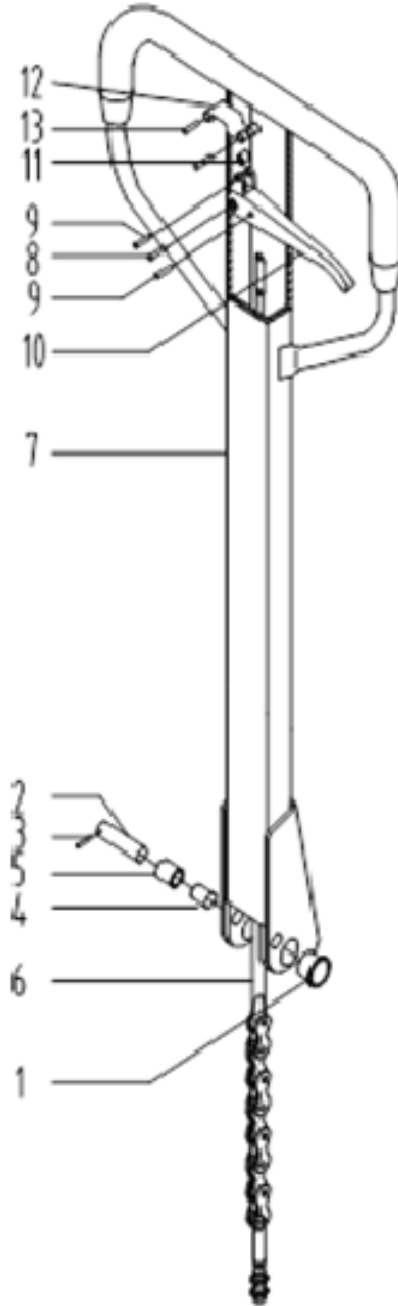
WESCO MANUFACTURING
ENGINEERING DEPARTMENT

WESCO INDUSTRIAL PRODUCTS, LLC
NORTH WALES PENNA. 19454

| | | | |
|--|-----------------|-----------------------|--------|
| PART NAME ADVANTAGE SCALE | | DRAWING: RWS 08-26-20 | |
| CHECKED: | | APP. ENGR. | |
| TOLERANCE UNLESS OTHERWISE SPECIFIED | | | |
| FRACTION | 3 PLACE DECIMAL | 2 PLACE DECIMAL | SCALE: |
| ± 1/64 | ± .005 | ± .01 | |
| ANGULAR ± 1-1/2° | | SHEET 1 OF 8 | 274720 |
| BREAK ALL SHARP EDGES AND REMOVE ALL BURRS | | | REV A |

274720

HANDLE ASSEMBLY



SEE PAGE 3

| REPLACEMENT PARTS LIST | | | |
|------------------------|----------|----------------------|------|
| ITEM | PART NO. | DESCRIPTION | QTY. |
| 1 | XXXXXX | BEARING SF-1F-20.15 | 2 |
| 2 | | PIN SHAFT WITH HOLE | 1 |
| 3 | | CYLINDRICAL PIN 4X20 | 1 |
| 4 | | BEARING SF-1-12.20 | 1 |
| 5 | | WHEEL | 1 |
| 6 | | PULLING ROD ASSY | 1 |
| 7 | | HANDLE ASSY | 1 |
| 8 | | CYLINDRICAL PIN 6X31 | 1 |
| 9 | | CYLINDRICAL PIN 4X20 | 2 |
| 10 | | KNOB | 1 |
| 11 | | WHEEL | 1 |
| 12 | | FIXED PLATE | 1 |
| 13 | | CYLINDRICAL PIN 4X31 | 2 |

THIS DRAWING IN ALL PARTICULARS IS WESCO INDUSTRIAL PRODUCTS, LLC PROPERTY. ALL RIGHTS OF DESIGN, INVENTION OR USE OF ARE RESERVED.

PRINT ISSUED

AUG. 26, 2020

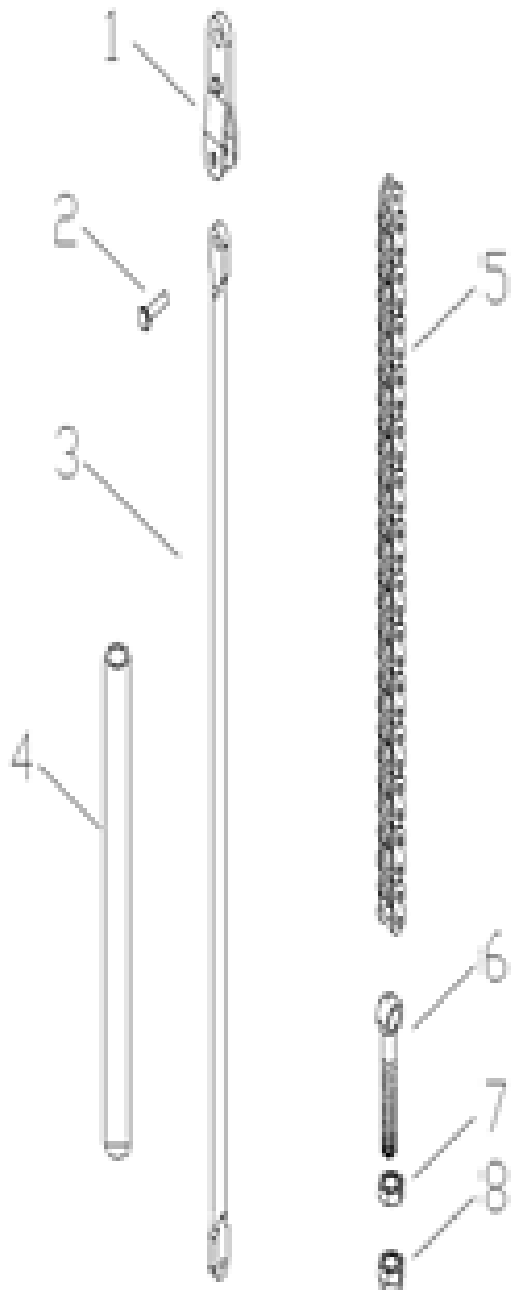
WESCO MANUFACTURING
ENGINEERING DEPARTMENT

| | | | | | |
|--|------------|-----------------|-----------------|--------------------------------|---|
| REV. | ECH & DATE | REVISIONS | APP. | WESCO INDUSTRIAL PRODUCTS, LLC | |
| | | | | NORTH WALES PENNA. 19454 | |
| | | | | PART NAME ADVANTAGE SCALE | |
| | | | | DRAWING: RWS 08-26-20 | |
| | | | | CHECKED: | |
| | | | | APP. ENGR. | |
| TOLERANCE UNLESS OTHERWISE SPECIFIED | | | | | |
| FRACTION | | 3 PLACE DECIMAL | 2 PLACE DECIMAL | SCALE: | |
| ± 1/64 | | ± .005 | ± .01 | 274720 | |
| ANGULAR ± 1-1/2° | | SHEET 2 OF 8 | | REV | A |
| BREAK ALL SHARP EDGES AND REMOVE ALL BURRS | | | | | |

274720

PULL ROD ASSEMBLY

| REPLACEMENT PARTS LIST | | | |
|------------------------|----------|-----------------------|------|
| ITEM | PART NO. | DESCRIPTION | QTY. |
| 1 | XXXXXX | HINGE PLATE | 1 |
| 2 | | RIVET 3X10 | 1 |
| 3 | | PULLING ROD | 1 |
| 4 | | SLEEVE | 1 |
| 5 | | ROLLER CHAIN 04C-1-19 | 1 |
| 6 | | EYELET BOLT | 1 |
| 7 | | NUT M5 | 1 |
| 8 | | NUT M5 | 1 |



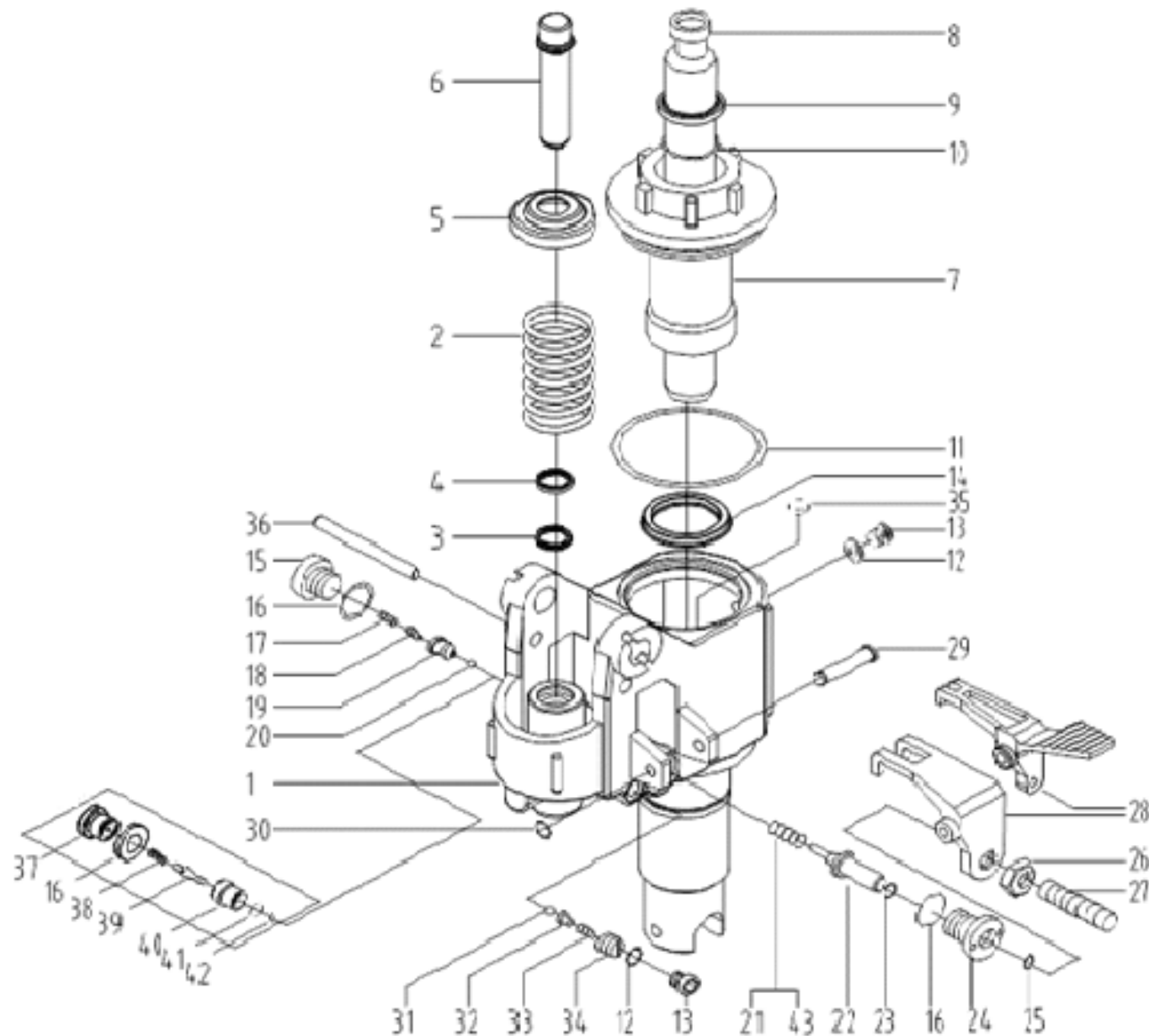
THIS DRAWING IN ALL PARTICULARS IS WESCO INDUSTRIAL PRODUCTS, LLC PROPERTY. ALL RIGHTS OF DESIGN, INVENTION OR USE OF ARE RESERVED.

PRINT ISSUED
 AUG. 26, 2020
 WESCO MANUFACTURING
 ENGINEERING DEPARTMENT

| | | | | | | | |
|--|------------|-----------------|-----------------|--------------------------------------|---|---------------------|--------------|
| REV. | ECH & DATE | REVISIONS | APP. | WESCO INDUSTRIAL PRODUCTS, LLC | | DRAWN: RWS 08-26-20 | |
| | | | | NORTH WALES | | | PENNA. 19454 |
| | | | | PART NAME | | | CHECKED: |
| | | | | ADVANTAGE SCALE | | | APP. ENGR. |
| | | | | TOLERANCE UNLESS OTHERWISE SPECIFIED | | SCALE: | |
| FRACTION | | 3 PLACE DECIMAL | 2 PLACE DECIMAL | | | | |
| ± 1/64 | | ± .005 | ± .01 | | | | |
| ANGULAR ± 1-1/2° | | SHEET 3 OF 8 | | 274720 | | | |
| BREAK ALL SHARP EDGES AND REMOVE ALL BURRS | | | | REV | A | | |

274720

PUMP ASSEMBLY



| REPLACEMENT PARTS LIST | | | |
|------------------------|----------|------------------------------|------|
| ITEM | PART NO. | DESCRIPTION | QTY. |
| 1 | XXXXXX | BASE ASSY | 1 |
| 2 | | COMPRESSED SPRING | 1 |
| 3 | | SEAL RING UHS18-26-5 | 1 |
| 4 | | DUST RING DHS18-26-4.5/6 | 1 |
| 5 | | SPRING CAP | 1 |
| 6 | | PUMP CORE | 1 |
| 7 | | GUIDE SLEEVE | 1 |
| 8 | | PISTON ROD | 1 |
| 9 | | DUST RING DHS31.5-39.5-5/6.5 | 1 |
| 10 | | O-RING 31.5X3.55 | 1 |
| 11 | | O-RING 65X2.65 | 1 |
| 12 | | COMBINED WASHER 10 | 1 |
| 13 | | SCREW PLUG | 2 |
| 14 | | SEAL RING UHS31.5-41.5-6 | 1 |
| 15 | | SCREW PLUG | 1 |
| 16 | | COMBINED WASHER 20 | 2 |
| 17 | | COMPRESSED SPRING | 1 |
| 18 | | VALVE CORE | 1 |
| 19 | | VALVE BODY | 1 |
| 20 | | STEEL BALL 1/4 | 1 |
| 21 | | COMPRESSED SPRING | 1 |
| 22 | | FIRING PIN | 1 |
| 23 | | O-RING 6.9X1.8 | 1 |
| 24 | | FIRING PIN SEAT | 1 |
| 25 | | O-RING 8X2.65 | 1 |
| 26 | | NUT M6 | 1 |
| 27 | | SCREW M6X25 | 1 |
| 28 | | LEVER PLATE | 1 |
| 29 | | STEPPED SHAFT | 1 |
| 30 | | CIRCLIP FOR SHAFT A-8 | 1 |
| 31 | | STEEL BALL 5 | 1 |
| 32 | | BALL SEAT | 1 |
| 33 | | COMPRESSED SPRING | 1 |
| 34 | | PRESSURE ADJUSTING SCREW | 1 |
| 35 | | MAGNETIC STEEL | 1 |
| 36 | | PIN SHAFT | 1 |
| 37 | | SCREW PLUG | 1 |
| 38 | | COMPRESSED SPRING | 1 |
| 39 | | VALVE CORE | 1 |
| 40 | | THREAD VALVE BODY | 1 |
| 41 | | O-RING 10.6X1.8 | 1 |
| 42 | | STEEL BALL 7 | 1 |
| 43 | | COMPRESSED SPRING | 1 |

THIS DRAWING IN ALL PARTICULARS IS WESCO INDUSTRIAL PRODUCTS, LLC PROPERTY. ALL RIGHTS OF DESIGN, INVENTION OR USE OF ARE RESERVED.

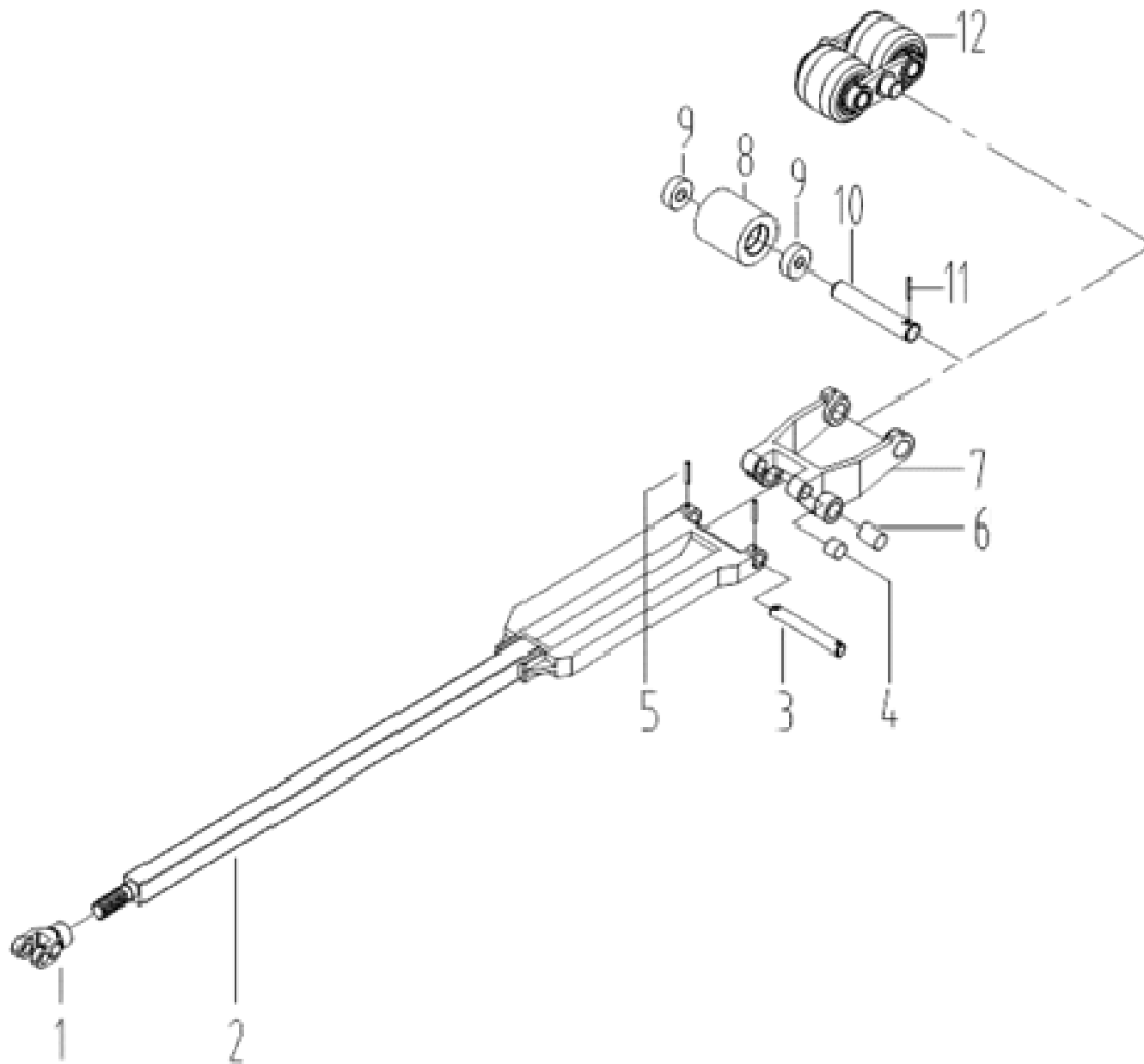
PRINT ISSUED
 AUG. 26, 2020
 WESCO MANUFACTURING
 ENGINEERING DEPARTMENT

| | | |
|---------------------------|--|---|
| REV. ECH & DATE REVISIONS | WESCO INDUSTRIAL PRODUCTS, LLC NORTH WALES PENNA. 19454 | |
| | PART NAME ADVANTAGE SCALE | DRAWN: RWS 08-26-20 CHECKED: APP. ENGR. |
| | TOLERANCE UNLESS OTHERWISE SPECIFIED FRACTION 3 PLACE DECIMAL 2 PLACE DECIMAL ± 1/64 ± .005 ± .01 ANGULAR ± 1-1/2° SHEET 4 OF 8 BREAK ALL SHARP EDGES AND REMOVE ALL BURRS | |
| | SCALE: 274720 REV A | |

274720

CONNECTING ROD AND WHEEL CARRIAGE ASSEMBLY

| REPLACEMENT PARTS LIST | | | |
|------------------------|----------|-----------------------------------|------|
| ITEM | PART NO. | DESCRIPTION | QTY. |
| 1 | XXXXXX | JOINT | 1 |
| 2 | | CONNECTING ROD ASSY | 1 |
| 3 | | PIN SHAFT WITH HOLE | 1 |
| 4 | | BEARING SF-1-16.16 | 2 |
| 5 | | CYLINDRICAL PIN 5X28 | 2 |
| 6 | | BEARING SF-1-16.25 | 2 |
| 7 | | WHEEL CARRIAGE | 1 |
| 8 | | WHEEL | 1 |
| 9 | | DEEP GROOVE BALL BEARING 6204-2RS | 2 |
| 10 | | PIN SHAFT WITH HOLE | 1 |
| 11 | | CYLINDRICAL PIN 5X32 | 1 |
| 12 | | DOUBLE ROLLERS ASSY | 1 |



THIS DRAWING IN ALL PARTICULARS IS WESCO INDUSTRIAL PRODUCTS, LLC PROPERTY. ALL RIGHTS OF DESIGN, INVENTION OR USE OF ARE RESERVED.

PRINT ISSUED

AUG. 26, 2020

WESCO MANUFACTURING
ENGINEERING DEPARTMENT

| | | | |
|--|-----------------|-----------------------|--|
| WESCO INDUSTRIAL PRODUCTS, LLC NORTH WALES PENNA. 19454 | | DRAWING: RWS 08-26-20 | |
| | | CHECKED: | |
| PART NAME | | APP. ENGR. | |
| ADVANTAGE SCALE | | SCALE: | |
| TOLERANCE UNLESS OTHERWISE SPECIFIED | | | |
| FRACTION | 3 PLACE DECIMAL | 2 PLACE DECIMAL | |
| ± 1/64 | ± .005 | ± .01 | |
| ANGULAR ± 1-1/2° | SHEET 5 OF 8 | | |
| BREAK ALL SHARP EDGES AND REMOVE ALL BURRS | | | |

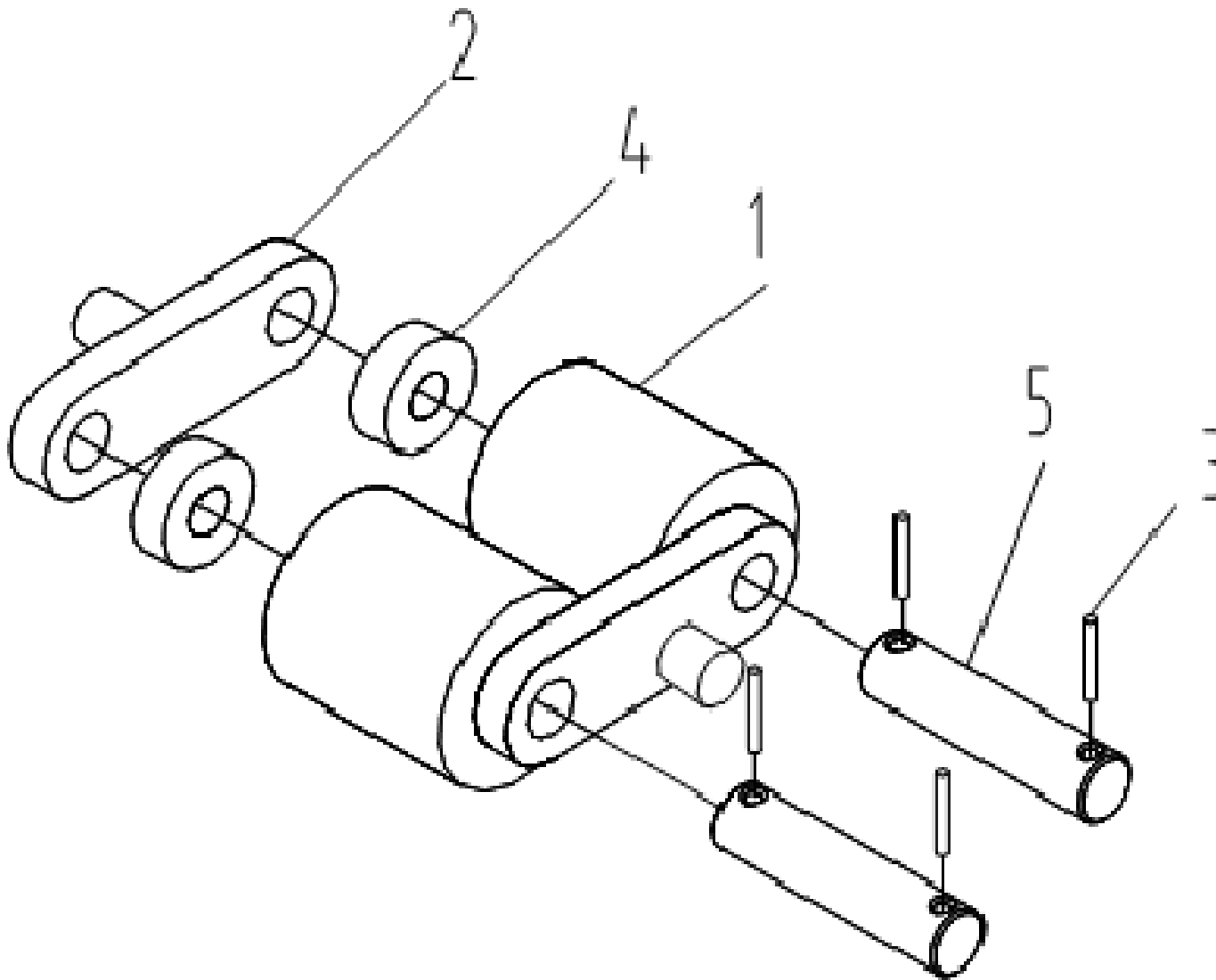
REV. ECH & DATE APP. REVISIONS

274720 REV A

274720

LOAD WHEEL ASSEMBLY

| REPLACEMENT PARTS LIST | | | |
|------------------------|----------|---------------------------------|------|
| ITEM | PART NO. | DESCRIPTION | QTY. |
| 1 | XXXXXX | WHEEL | 2 |
| 2 | | SUPPORT PLATE | 2 |
| 3 | | CYLINDRICAL PIN 5X32 | 4 |
| 4 | | DEEP GROOVE BALL BEARING 6204-Z | 4 |
| 5 | | PIN SHAFT WITH HOLE | 2 |



THIS DRAWING IN ALL PARTICULARS IS WESCO INDUSTRIAL PRODUCTS, LLC PROPERTY. ALL RIGHTS OF DESIGN, INVENTION OR USE OF ARE RESERVED.

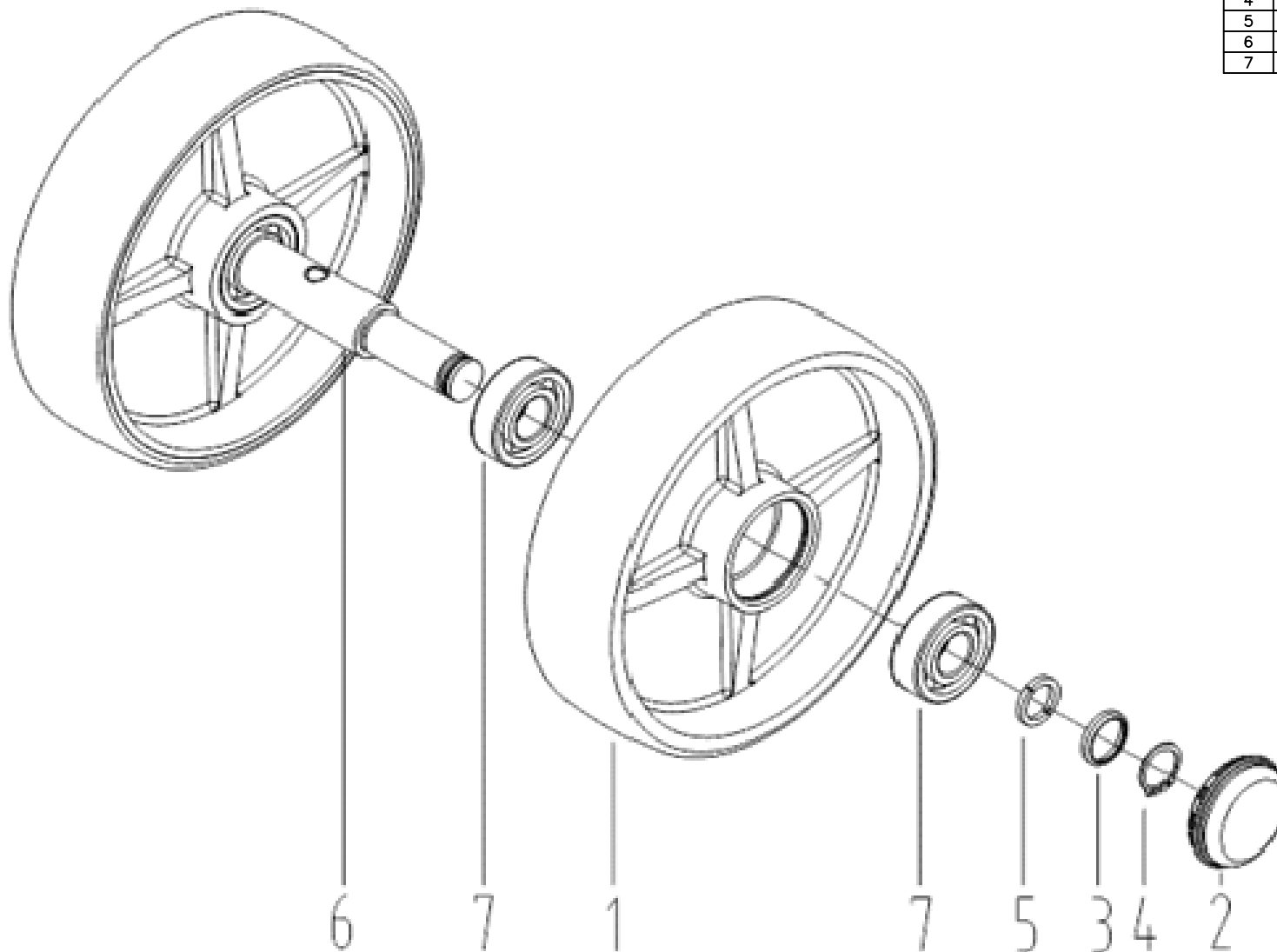
PRINT ISSUED
 AUG. 26, 2020
 WESCO MANUFACTURING
 ENGINEERING DEPARTMENT

| | | | | |
|--|-----------------------|--------------|--------------------------------|--|
| REV. ECH & DATE | PART NAME | | WESCO INDUSTRIAL PRODUCTS, LLC | |
| | | | NORTH WALES PENNA. 19454 | |
| | DRAWING: RWS 08-26-20 | | APP. ENGR. | |
| | CHECKED: | | SCALE: | |
| TOLERANCE UNLESS OTHERWISE SPECIFIED | | SCALE: | | |
| FRACTION 3 PLACE DECIMAL 2 PLACE DECIMAL | | SCALE: | | |
| ± 1/64 ± .005 ± .01 | | SCALE: | | |
| ANGULAR ± 1-1/2° | | SHEET 6 OF 8 | | |
| BREAK ALL SHARP EDGES AND REMOVE ALL BURRS | | 274720 | | |
| REV. | APP. | REV | A | |

274720

STEERING WHEEL ASSEMBLY

| REPLACEMENT PARTS LIST | | | |
|------------------------|----------|-----------------------------------|------|
| ITEM | PART NO. | DESCRIPTION | QTY. |
| 1 | XXXXXX | WHEEL | 2 |
| 2 | | DUST COVER | 2 |
| 3 | | BOWL PAD | 2 |
| 4 | | CIRCLIP FOR SHAFT A-20 | 2 |
| 5 | | SEMI-RING | 4 |
| 6 | | STEPPED SHAFT | 1 |
| 7 | | DEEP GROOVE BALL BEARING 6204-2RS | 4 |



THIS DRAWING IN ALL PARTICULARS IS WESCO INDUSTRIAL PRODUCTS, LLC PROPERTY. ALL RIGHTS OF DESIGN, INVENTION OR USE OF ARE RESERVED.

PRINT ISSUED

AUG. 26, 2020

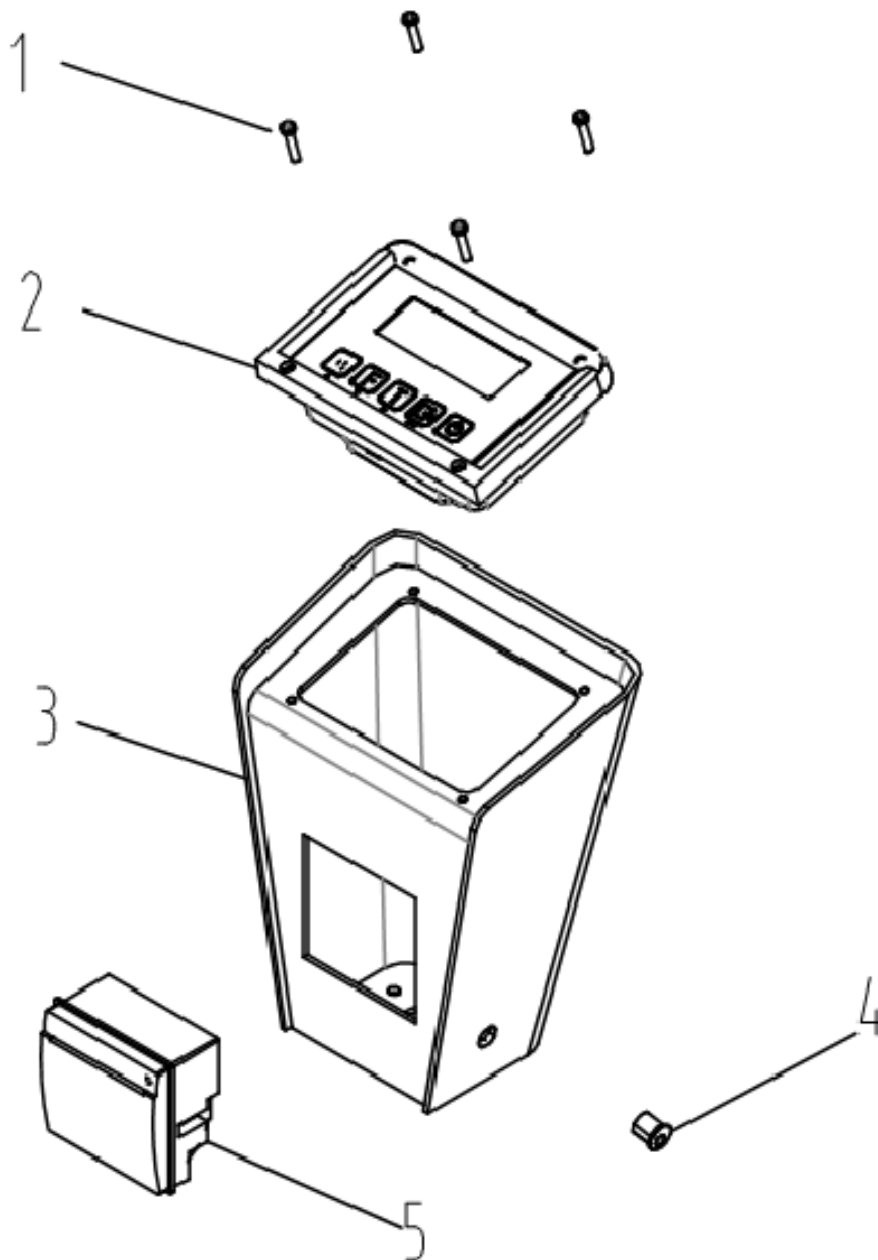
WESCO MANUFACTURING
ENGINEERING DEPARTMENT

| | | | | | | |
|--|--------------------------------------|-----------------|-------------|-----------------|--------------|--------|
| REV. ECH & DATE | WESCO INDUSTRIAL PRODUCTS, LLC | | NORTH WALES | | PENNA. 19454 | |
| | PART NAME | | | DRAWING | | |
| | ADVANTAGE SCALE | | | RWS 08-26-20 | | |
| | TOLERANCE UNLESS OTHERWISE SPECIFIED | | | APP. ENGR. | | |
| FRACTION | | 3 PLACE DECIMAL | | 2 PLACE DECIMAL | | SCALE: |
| ± 1/64 | | ± .005 | | ± .01 | | |
| ANGULAR ± 1-1/2° | | SHEET 7 OF 8 | | 274720 | | REV A |
| BREAK ALL SHARP EDGES AND REMOVE ALL BURRS | | | | | | |

274720

SCALE ASSEMBLY

| REPLACEMENT PARTS LIST | | | |
|------------------------|----------|----------------------|------|
| ITEM | PART NO. | DESCRIPTION | QTY. |
| 1 | XXXXXX | SCREW M4X20 | 4 |
| 2 | | INSTRUMENT | 1 |
| 3 | | INSTRUMENT CASE ASSY | 1 |
| 4 | | CHARGING SOCKET | 1 |
| 5 | | PRINTER | 1 |



THIS DRAWING IN ALL PARTICULARS IS WESCO INDUSTRIAL PRODUCTS, LLC PROPERTY. ALL RIGHTS OF DESIGN, INVENTION OR USE OF ARE RESERVED.

PRINT ISSUED

AUG. 26, 2020

WESCO MANUFACTURING
ENGINEERING DEPARTMENT

| | | | |
|--|---|---------------------------|--------------------------|
| REV. ECH & DATE REVISIONS APP. | WESCO INDUSTRIAL PRODUCTS, LLC NORTH WALES PENNA. 19454 | | DRAWN: RWS 08-26-20 |
| | PART NAME ADVANTAGE SCALE | | CHECKED: |
| | TOLERANCE UNLESS OTHERWISE SPECIFIED | | APP. ENGR. |
| | FRACTION ± 1/64 | 3 PLACE DECIMAL ± .005 | 2 PLACE DECIMAL ± .01 |
| ANGULAR ± 1-1/2° | | SHEET 8 OF 8 | 274720 |
| BREAK ALL SHARP EDGES AND REMOVE ALL BURRS | | | REV A |