



# Instruction Manual

## *Hydraulic Die Table*

Part Number: 273265



### Table of Contents

1	Specifications.....	2
2	Safety Information.....	2
3	Operation.....	2
4	Maintenance.....	2
5	Part Information.....	3
5.1	Pump Part Diagram.....	3
5.2	Pump Part List.....	4
5.3	Frame Assembly Part Diagram.....	5
5.4	Frame Assembly Part List.....	6

ATTENTION: TO INSURE SAFE AND EASY USE OF YOUR WESCO HYDRAULIC TABLE, READ THESE INSTRUCTIONS ENTIRELY BEFORE USING.

## **1. SPECIFICATIONS**

Part Number		273265
Model		DT-2436
Capacity		2,000 lbs
Table Size (L x W)		36" x 24"
Table Thickness		.2"
Lowered Height		24.25"
Lifting Height		36"
Overall Dimensions	Height	36.75"
	Width	24"
	Depth	49.5"
Wheel	Load Wheel Diameter	5" x 1.5"
	Steering Wheel Diameter	4.75" x 1.5"
Weight		265 lbs

*Materials and specifications are subject to change without notice.*

## **2. SAFETY INFORMATION**

- 1、 Do not load the hydraulic table beyond its rated capacity (2,000 lbs).
- 2、 Do not allow people to sit or ride on the hydraulic table.
- 3、 Secure load before raising or lowering the hydraulic table.
- 4、 Do not transport loads while the hydraulic table is in a raised position.
- 5、 Use only on smooth surfaces.
- 6、 Keep hands and feet clear when raising or lowering lift.
- 7、 Press the small pedal slowly, to avoid dropping the load too quickly.
- 8、 Failure to comply with the instructions and warnings in this manual may result in personal injury or property damage.

## **3. OPERATION**

- 1) Push the table to the area where desired for operation.
- 2) Engage the brake bar with hand to fix the table in place.
- 3) Press the big pedal and to raise the table.
- 4) Press the small release pedal and the table will lower slowly.

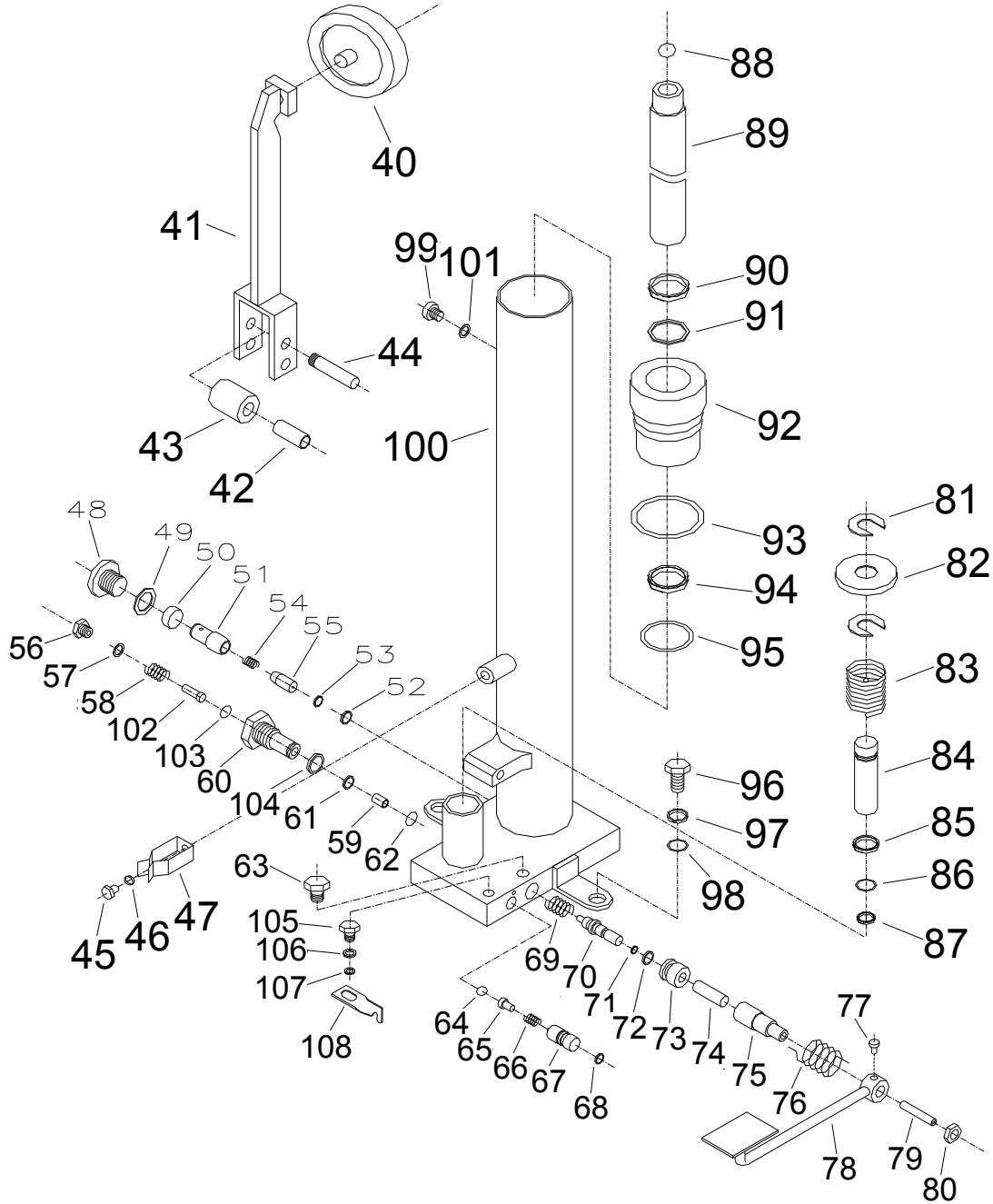
## **4. MAINTENANCE**

- 1、 Lubricate each friction point monthly with a good, quality grease.
- 2、 Check the free movement and wear of wheels. Replace if needed.
- 3、 Check caster brake function. It should lock firmly and release completely.
- 4、 Check for oil leakage from hydraulic cylinder.

ATTENTION: TO INSURE SAFE AND EASY USE OF YOUR WESCO HYDRAULIC TABLE, READ THESE INSTRUCTIONS ENTIRELY BEFORE USING.

**5. PART INFORMATION**

**5.1 PUMP PART DIAGRAM**



ATTENTION: TO INSURE SAFE AND EASY USE OF YOUR WESCO HYDRAULIC TABLE, READ THESE INSTRUCTIONS ENTIRELY BEFORE USING.

## 5. PART INFORMATION

### 5.2 PUMP PART DIAGRAM

Item #	Part Number	Item Description	Qty.	Item #	Part Number	Item Description	Qty.
40		Cushion	1	75		Valve Pole	1
41		Big Pedal	1	76		Distortion Of Spring	1
42		Oil Less Bearing	2	77		Bolt M6 × 10	1
43		Press The Wheel	1	78		Back To Oil Footboard	1
44		Axle	2	79		Screw M6 × 35	1
45		Screw M6×10	1	80		Nut M6	1
46		Spring Washer 6	1	81		Snap Ring 15	2
47		Lock Slice	1	82		Spring Cup	1
48		Bolt	1	83	273245	Spring	1
48		Composite Washer14	1	84		Pump Plunger	1
50		Regulate Bolt	1	85		Dust Seal Ring DH18	1
51		Valve	1	86		Ring	1
52		Washer	1	87		O Seal Ring	1
53		Snap Ring 8	1	88		Steel Ball Φ14	1
54		Spring	1	89		Piston Rod	1
55		Valve Core	1	90		Dust Seal Ring DH28	1
56		Bolt	1	91		O Seal Ring 28 × 3.55	1
57		Composite Washer 8	1	92		Top Nut	1
58		Spring	1	93		O Seal Ring 50 × 3.55	1
59		Valve Core	1	94		Oil Seal UHS28	1
60		Valve	1	95		O Seal Ring 35.5 × 1.8	1
61		O Seal Ring 6.9 × 1.8	1	96		Bolt M10 × 25	2
62		Steel Ball Φ7	1	97		Spring Washer 10	2
63		Bolt	1	98		Plane Washer 10	2
64		Steel Ball Φ5	1	99		Bolt M10×8	1
65		Spring Bolt	1	100		Cylinder	1
66		Spring	1	101		Composite Washer 10	1
67		Relief Valve Bolt	1	102		Lift Pin	1
68		O Seal Ring 8 × 1.8	1	103		Steel Ball Φ5.5	1
69		Spring	1	104		Composite Washer 14	1
70		Return Oil Ram	1	105		Bolt M8 × 16	1
71		O Seal Ring 3.75 × 1.8	1	106		Spring Washer 8	1
72		O Seal Ring 10.6 × 2.65	1	107		Plane Washer 8	1
73		Return Oil Valve	1	108		Settled Board	1
74		Rolling Needle Φ8 × 25.8	1				

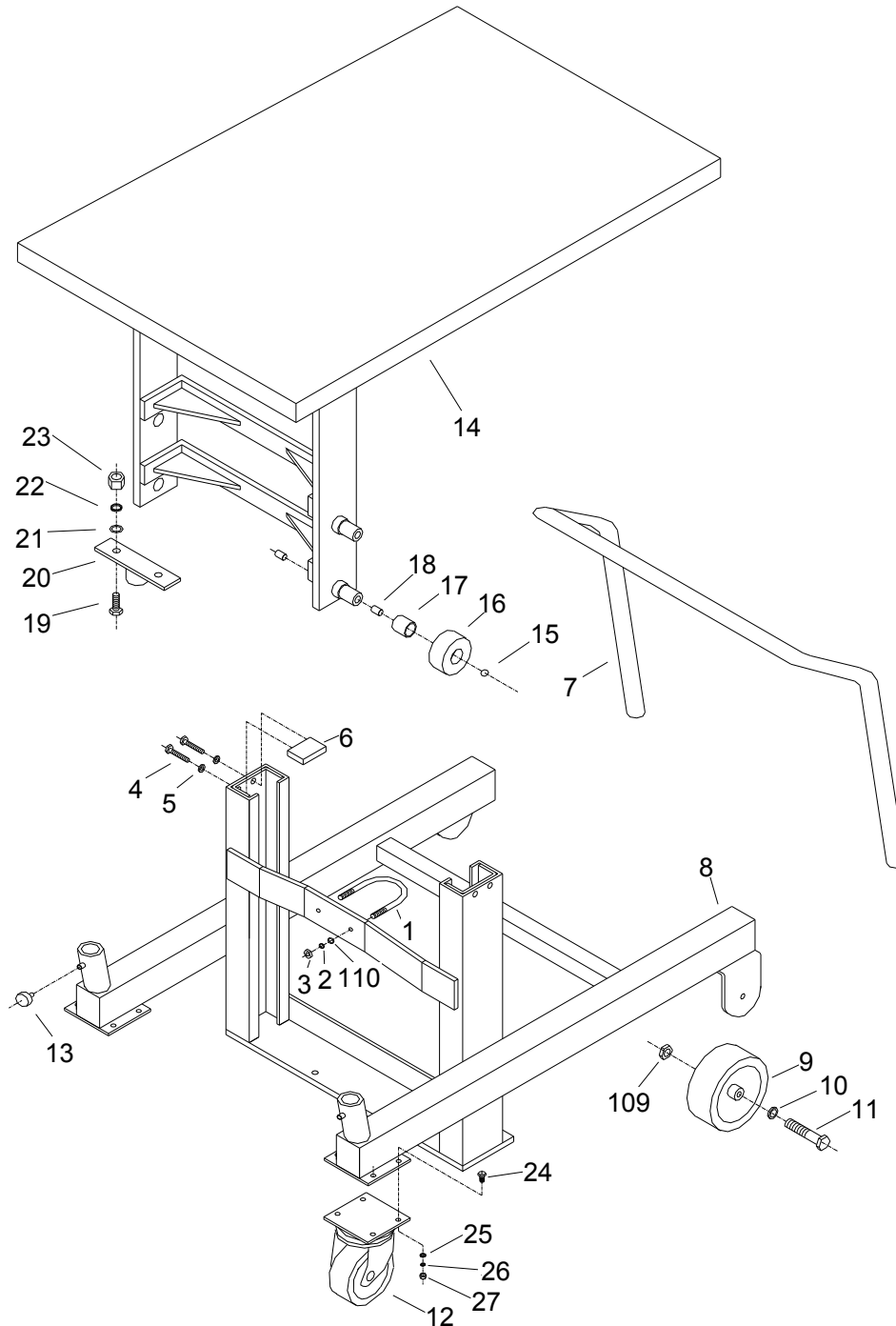
### REPLACEMENT KIT LIST

Kit	Part Number	Description	Qty.
A	273281	Pedal Kit (Includes Items: 40, 41, 42, 43 & 44)	1
B	273282	Floor Lock Kit (Includes Items: 24, 25, 25, 26, 27, 28, 29, 30, 31, 32, 33, 34, 35, 36, 37, 38 & 39)	1
C	273266	Complete Pump - For units manufactured after 9/2011 (Includes Items 45-100 & 102-108)	1

ATTENTION: TO INSURE SAFE AND EASY USE OF YOUR WESCO HYDRAULIC TABLE, READ THESE INSTRUCTIONS ENTIRELY BEFORE USING.

**5. PART INFORMATION**

**5.3 FRAME ASSEMBLY PART DIAGRAM**



ATTENTION: TO INSURE SAFE AND EASY USE OF YOUR WESCO HYDRAULIC TABLE, READ THESE INSTRUCTIONS ENTIRELY BEFORE USING.

**5. FRAME ASSEMBLY PART INFORMATION**

**5.4 FRAME ASSEMBLY PART LIST**

Item #	Part Number	Item Description	Qty.	Item #	Part Number	Item Description	Qty.
1		U Bolt	1	15		Steel Ball Φ12	4
2		Spring Washer 8	2	16		Gyro Wheel Φ63 × 29	4
3		Nut M8	2	17		Bush	4
4		Bolt M8 × 35	4	18		Screw M12 × 16	8
5		Spring Washer 8	4	19		Bolt M10 × 35	2
6		Restrict Bar	2	20		Carry Seats	1
7		Handle	1	21		Plane Washer 10	2
8		Frame	1	22		Spring Washer 10	2
9		Load Wheel	2	23		Nut M10	2
10		Plane Washer 16	4	24		Bolt M8 × 25	8
11		Bolt M16 × 95	2	25		Plane Washer 8	8
*12	273268	Rear Caster (Old Style)	2	26		Spring Washer 8	8
	273247	Rear Caster (New Style)		27		Nut M8	8
13		Bolt	2	109		Nut 16	2
14		Hoist/Lower Platform	1	110		Plane Washer 8	2

\* Item 12 Old Style Caster for units manufactured before 9/2011. New Style Caster for units manufactured after 9/2011.

**REPLACEMENT KIT LIST**

Kit	Part Number	Description	Qty.
D	273283	Handle Kit (Includes Items: 7 & 13)	1
E	273284	Roller Kit (Includes Items: 15, 16, 17 & 18)	1
F	273285	Hardware Kit (Includes Items: 1, 2, 3, 4, 5, 6, 19, 20, 21, 22 & 23)	1
G	273267	Front Wheel Kit (Includes Items: 9, 10 & 11)	1