

NON KIT ITEMS			
ITEM	PART NO.	DESCRIPTION	QTY
	172446	JACK	1
	172159	U-BOLT FOR WELDED ON JACK	1
63		ROUND PILLAR PIN	1
64	172460	VALVE INNER	1
65		O-RING	2

KIT ASSEMBLIES			
KIT	PART NO.	DESCRIPTION	QTY.
*G	172338	CHAIN COVER ASSEMBLY	
	48	CHAIN COVER (PLASTIC)	1
	49	CHAIN WHEEL AXLE	1
	51	CHAIN WHEEL SEAT	1
H	172353	CHAIN KIT	
	43	SPLIT PIN	2
	44	CHAIN BOLT	2
	45	ROLLER CHAIN	1
J	172416	JACK RELEASE KIT	
	38	TORSION SPRING	1
	39	POSITIONING BOLT	1
	40	POSITIONING RING	1
	41	SINGLE DIRECTION VALVE POLE	1
	42	HANDLE	1
K	172417	FOOT PEDAL PUMP KIT	
	73	OIL CUP	2
	74	PUMP AXLE	1
	75	PUMP BASE	1
	76	NUT	1
	77	PUMP RING AXLE	1
	78	PUMP RING	1
	79	OIL FREE BEARING	1
	80	STEEL BALL	1
	81	AXLE SLEEVE	1
L	172418	CARRIAGE KIT	
	7	SHIELD PIN	4
	8	HEX BOLT	4
	9	WASHER	4
	10	ROLLING WHEEL	4
	11	OIL FREE BEARING	4
	12	ROLLING WHEEL AXLE	4
	13	FIXED RACK	1
	14	LONG AXLE	1
	15	SPLIT RING	2

*NOTE: KIT G CHAIN COVER ASSEMBLY CONSISTS OF THE PLASTIC COVER, AXLE AND CHAIN WHEEL SEAT. THIS ASSEMBLY CAN BE USED TO REPLACE THE CURRENT PLASTIC COVER OR THE IRON COVER. THE AXLE AND CHAIN WHEEL SEAT ARE ONLY NECESSARY WHEN REPLACING THE IRON COVER.

NOTE: ITEMS 16, 17, 23, 36, 37, 46-51, 57-59, 62, 66-68, 72, 84-87 ARE NOT OFFERED AS REPLACEMENT PARTS.

KIT ASSEMBLIES				
KIT	PART NO.	ITEM	DESCRIPTION	QTY.
A	172445		SEAL KIT	
	27		INTERNAL HEX BOLT	2
	28		COPPER WASHER	2
	29		CONE SPRING	2
	30		STEEL BALL	4
	31		BOLT PLUG	2
	32		O-RING	2
	33		BOLT	1
	34		SPRING	1
	35		SHORT PIN	1
	53		DUST PROOF RING	1
	54		O-RING	2
	55		NYLON RING	1
	56		INSIDE PISTON GLOVE	1
	60		ECCENTRIC SEALING PLATE	1
	61		OIL PUMP SPRING	1
	63		ROUND PILLAR PIN	1
	64		VALVE INNER	1
	65		O-RING	2
	69		DUST PROOF RING	1
	70		O-RING	1
	71		NYLON RING	1
B	172415		HANDLE KIT	
	1		SLIDEWAY HANDRAIL	1
	2		NUT	2
	3		WASHER	2
	4		INTERNAL HEX BOLT	2
	5		HEX BOLT	4
	6		NUT	4
C	172170		CASTER KIT	
	24		NUT	1
	25		INTERNAL TEETHED LOCK WASHER	1
	26		BACK WHEEL	1
D	172168		WHEEL KIT	
	18		FRONT WHEEL AXLE	1
	19		SPLIT RING	2
	20		WASHER	2
	21		BEARING	2
	22		FRONT WHEEL	1
E	172356		FOOT PEDAL KIT	
	82		FOOT STEP LEVER	1
	83		RUBBER GLOVE	1
F	172358		CHAIN WHEEL KIT	
	49		OIL FREE BEARING	1
	47		CHAIN & WHEEL	1

THIS DRAWING IN ALL PARTICULARS IS WESCO INDUSTRIAL PRODUCTS, LLC PROPERTY. ALL RIGHTS OF DESIGN, INVENTION OR USE OF ARE RESERVED.

PRINT ISSUED

AUG. 22, 2018

WESCO MANUFACTURING
ENGINEERING DEPARTMENT

WESCO INDUSTRIAL PRODUCTS, LLC
NORTH WALES PENNA. 19454

PART NAME: STACKER: FORK TYPE
VALUE LIFT VL47
(MODEL MANUFACTURED AFTER 6/2013)

TOLERANCE UNLESS OTHERWISE SPECIFIED

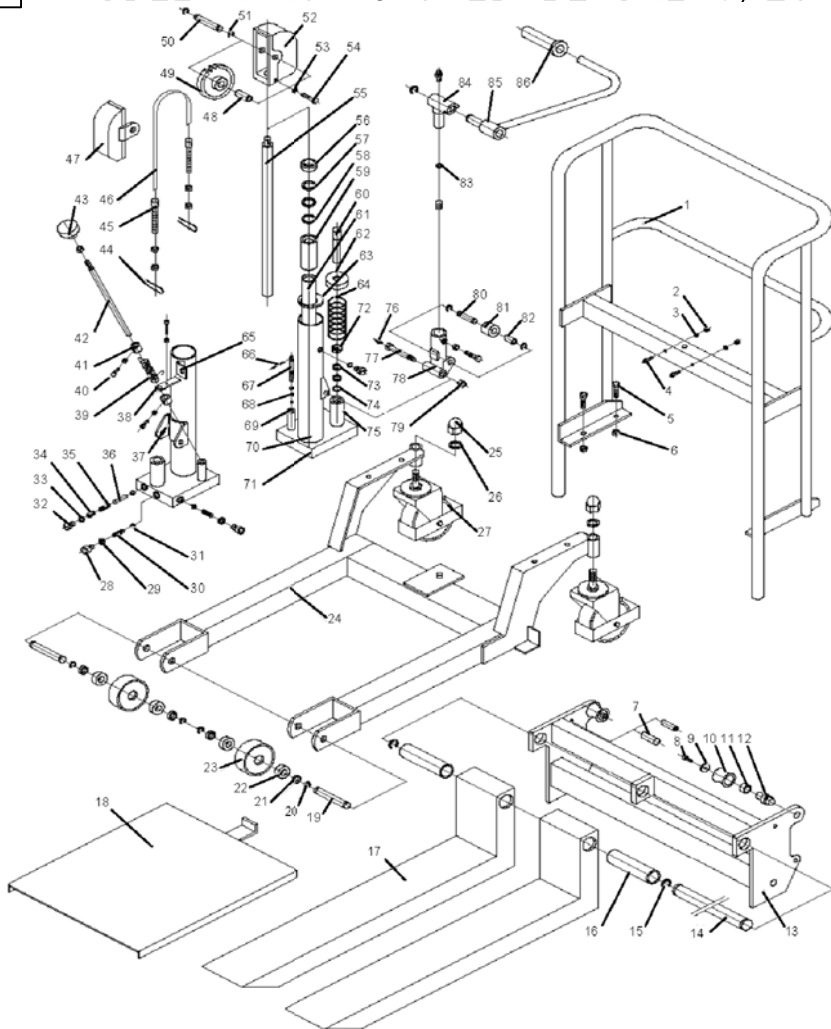
FRACTION	3 PLACE DECIMAL	2 PLACE DECIMAL
± 1/64	± .005	± .01
ANGULAR ± 1-1/2'	SHEET 2 OF 2	

BREAK ALL SHARP EDGES AND REMOVE ALL BURRS

SCALE: D - 272940

272940

MODEL MANUFACTURED BEFORE 6/2013



NON KIT ITEMS			
ITEM	PART NO.	DESCRIPTION	QTY
	172164	JACK	1
	172159	U-BOLT FOR WELDED ON JACK	1
49	172358	CHAIN WHEEL	1
66	172480	COPPER BUSH #18x1	1
67	172481	CIRCLIP FOR SHAFT #10	1
68	172482	COPPER BUSH #10x1.5	1

KIT ASSEMBLIES			
KIT	PART NO.	KIT COMPONENTS	
		ITEM	DESCRIPTION
H	172353	1	CHAIN KIT
		44	SPLIT PIN
		45	CHAIN BOLT
		46	ROLLER CHAIN
J	172416	1	JACK RELEASE KIT
		39	TORSION SPRING
		40	POSITIONING BOLT
		41	POSITIONING RING
		42	SINGLE DIRECTION VALVE POLE
		43	HANDLE
K	172417	1	FOOT PEDAL PUMP KIT
		76	OIL CUP
		77	PUMP AXLE
		78	PUMP BASE
		79	NUT
		80	PUMP RING AXLE
		81	PUMP RING
		82	OIL FREE BEARING
		83	STEEL BALL
		84	AXLE SLEEVE
L	172418	1	CARRIAGE KIT
		7	SHIELD PIN
		8	HEX BOLT
		9	WASHER
		10	ROLLING WHEEL
		11	OIL FREE BEARING
		12	ROLLING WHEEL AXLE
		13	FIXED RACK
		14	LONG AXLE
		15	SPLIT RING
		16	SLEEVE

KIT ASSEMBLIES			
KIT	PART NO.	KIT COMPONENTS	
		ITEM	DESCRIPTION
A	172355	1	SEAL KIT
		32	BOLT
		34	SCREW
		35	SPRING
		36	PIN
		37	LINK PLATE
		56	DUSTPROOF RING
		57	O-RING
B	172415	1	HANDLE KIT
		1	SLIDEWAY HANDRAIL
		2	NUT
		3	WASHER
		4	INTERNAL HEX BOLT
		5	HEX BOLT
		6	NUT
C	172170	1	CASTER KIT
		25	NUT
		26	INTERNAL TEETHED LOCK WASHER
		27	BACK WHEEL
D	172168	1	WHEEL KIT
		19	FRONT WHEEL AXLE
		20	SPLIT RING
		21	WASHER
		22	BEARING
		23	FRONT WHEEL
E	172356	1	FOOT PEDAL KIT
		85	FOOT STEP LEVER
		86	RUBBER GLOVE
F	172358	1	CHAIN WHEEL KIT
		48	OIL FREE BEARING
		49	CHAIN & WHEEL
		50	CHAIN WHEEL AXLE
		51	SPLIT RING
*G	172338	1	CHAIN COVER ASSEMBLY
		47	CHAIN COVER (PLASTIC)
		52	CHAIN COVER (PLASTIC)
		50	CHAIN WHEEL AXLE
			CHAIN WHEEL SEAT

*NOTE: KIT G CHAIN COVER ASSEMBLY CONSISTS OF THE PLASTIC COVER, AXLE AND CHAIN WHEEL SEAT. THIS ASSEMBLY CAN BE USED TO REPLACE THE CURRENT PLASTIC COVER OR THE IRON COVER. THE AXLE AND CHAIN WHEEL SEAT ARE ONLY NECESSARY WHEN REPLACING THE IRON COVER.

NOTE: ITEMS 17, 18, 24, 37, 38 60, 61, 62, 65, 69, 70, 71 ARE NOT OFFERED AS REPLACEMENT PARTS.

THIS DRAWING IN ALL PARTICULARS IS WESCO INDUSTRIAL PRODUCTS, LLC PROPERTY. ALL RIGHTS OF DESIGN, INVENTION OR USE OF ARE RESERVED.

PRINT ISSUED

AUG. 22, 2018

WESCO MANUFACTURING
ENGINEERING DEPARTMENTWESCO INDUSTRIAL PRODUCTS INC.
NORTH WALES
PENNA. 19454PART NAME STACKER: FORK TYPE
VALUE LIFT VL47
(MODEL MANUFACTURED BEFORE 6/2013)

TOLERANCE UNLESS OTHERWISE SPECIFIED

FRACTION	3 PLACE DECIMAL	2 PLACE DECIMAL
± 1/64	± .005	± .01

ANGULAR ± 1-1/2' SHEET 1 OF 2

BREAK ALL SHARP EDGES AND REMOVE ALL BURRS

DRAWN:

CHECKED:

APP. ENGR.

SCALE:

D - 272940

REV