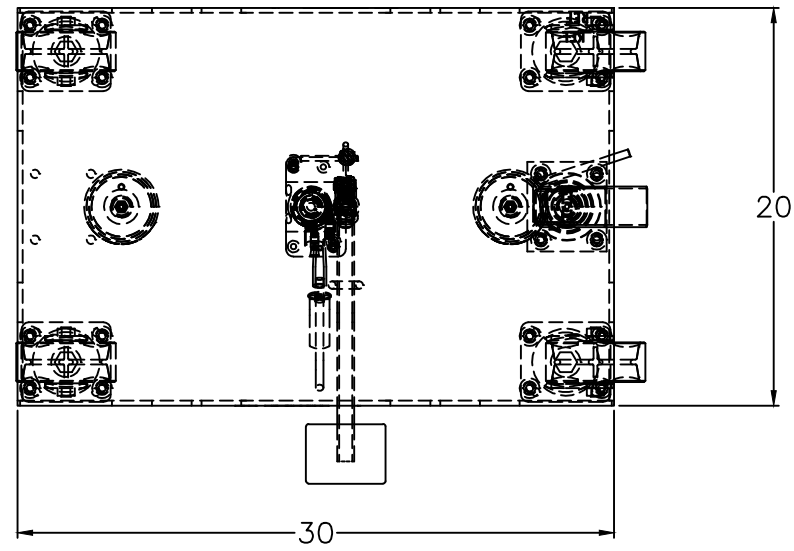
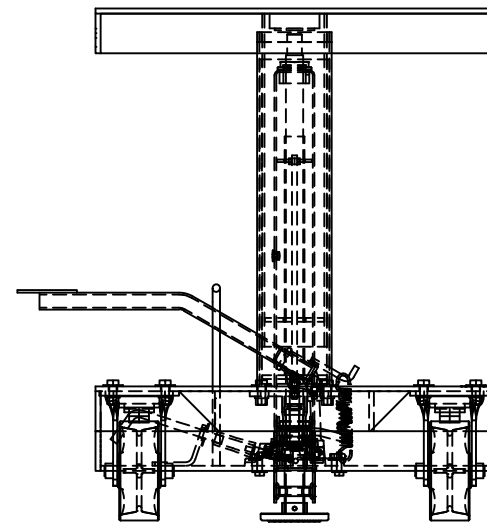
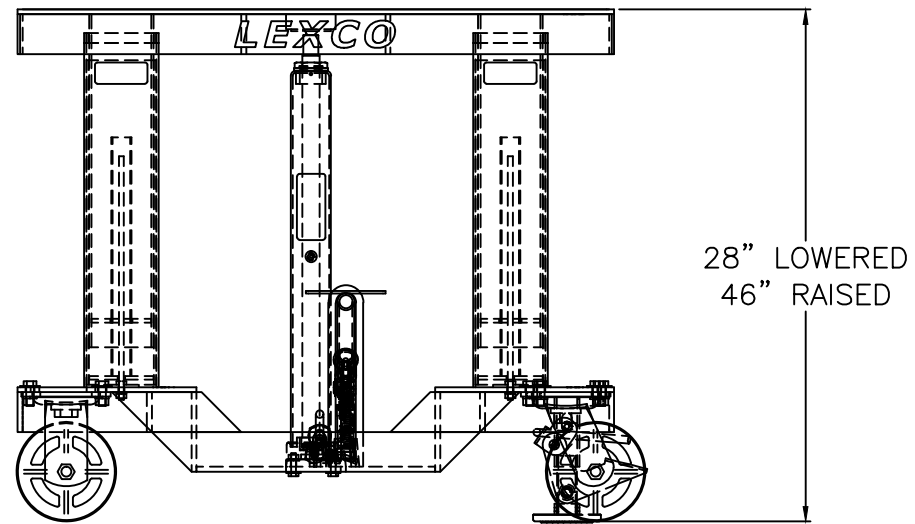


492234



Foot Operated Hydraulic Lift Table

- Top and base 12 gauge steel.
- 2 rigid and 2 swivel 5" diameter rubber casters.
- Floor lock.
- Optional phenolic resin, polyurethane and steel caster wheels.
- Precision telescoping guide tubes.



Specs

- Capacity: 500 lbs
- Table size: 20" x 30"
- Lowered height: 28"
- Raised height: 46"
- Caster size: 5"
- Lift: 18"
- Weight: 173 lbs
- Base: Drop

THIS DRAWING IN ALL PARTICULARS IS WESCO INDUSTRIAL PRODUCTS INC. PROPERTY. ALL RIGHTS OF DESIGN, INVENTION OR USE OF ARE RESERVED.

REV.	ECN & DATE	APP	WESCO INDUSTRIAL PRODUCTS INC.			
			LANSDALE PENNA. 19446			
			PART NAME		DRAWN:	
			HT-2388-05-FR		CHECKED:	
			TOLERANCE UNLESS OTHERWISE SPECIFIED		APP. ENGR.	
FRACTION		3 PLACE DECIMAL	2 PLACE DECIMAL	SCALE:		
± 1/64		± .005	± .01	B- 492234 REV		
ANGULAR ± 1-1/2'		SHEET 1 OF 1				
BREAK ALL SHARP EDGES AND REMOVE ALL BURRS						