

POWERED STACKER 1,000 LBS

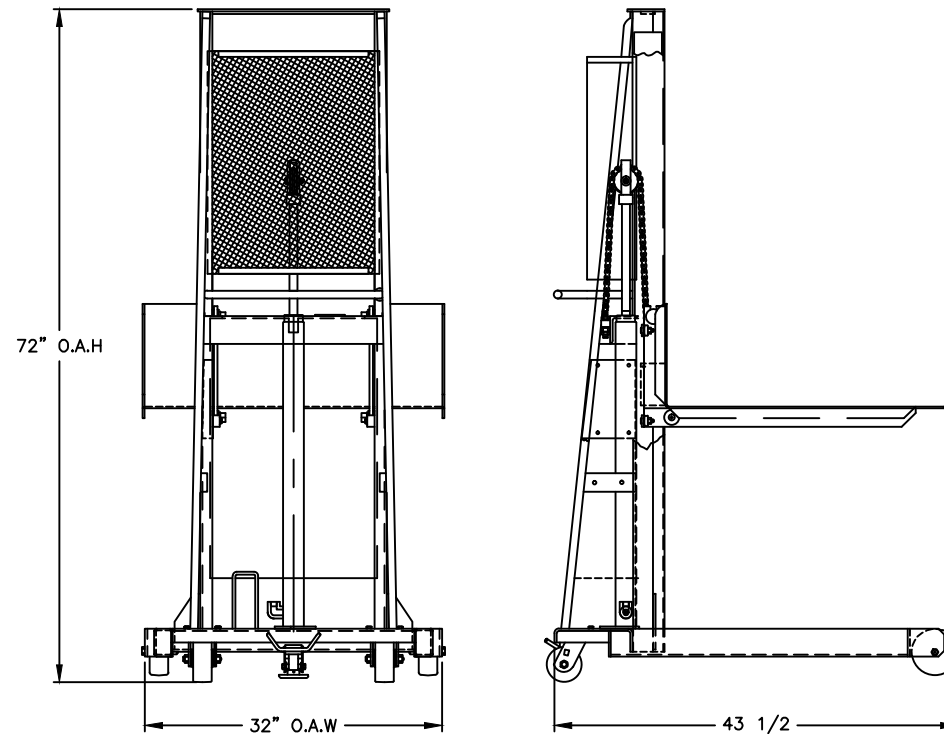
Features:

- Remote control, floor lock, and safety screen are standard on all models.
- With a minimally charged battery, unit can be used while recharging.
- Three light LED charge status indicator - No extra cost.
- Easy to read illuminated battery status voltmeter - No extra cost.
- 12V DC battery or 110V AC units available.

PLATFORM MODELS

- 24" X 24" OR 30" X 32" Platform size L X W
- 5" phenolic wheels on front, 4" phenolic swivel casters on rear.
- 110V AC models available.

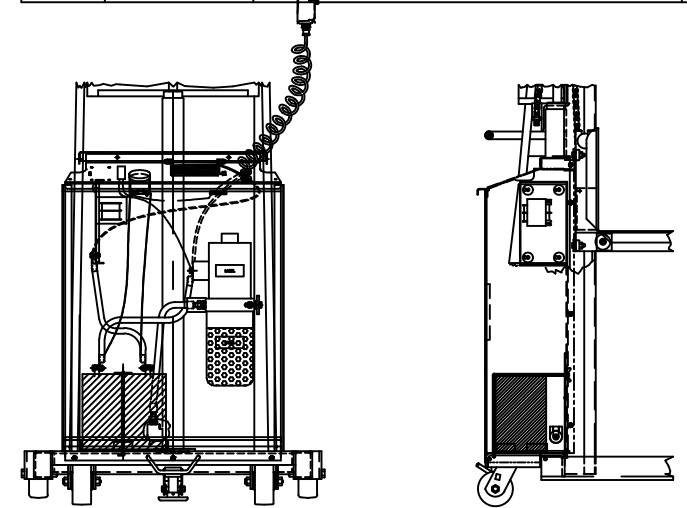
Model: **PESPL-60-3032**
 Lift Height: 60"
 O.A.H: 72"
 Weight: 457 lbs.
 Leg ID/OD: 25.5"/32"
 Capacity: 1,000 lbs.
 Load Center: 18"



FOR UNITS MANUFACTURED UP TO AUGUST 28, 2007

FOR UNITS MANUFACTURED AFTER TO AUGUST 28, 2007

POWER-LIFT STACKER PARTS LIST 56"/60" LIFT			
1	051166	HYDRAULIC CYLINDER	1
2	109101	POWER UNIT	1
3	109102	BATTERY	1
4	109104	VOLTMETER	1
5	052769	BATTERY CABLE (NEG.)	1
6	052770	BATTERY CABLE (POS.)	1
7	109114	BOARD: INDICATOR LIGHT	1
8	052762	BATTERY CHARGER	1
8	109150	BATTERY CHARGER	1
9	125824	HYDRAULIC HOSE	1
10	052726	REMOTE CONTROL ASS'Y	1
11	109325	SWITCH	1
12	050771	LIFT CHAIN ASS'Y	1
13	260143	ROLLER CARRIER ASS'Y	1
14	150001	FLOOR LOCK	1
15	053769	WHEEL	2
16	054265	CASTER	2
17	109117	SOLENOID	1
HYDRAULIC CYLINDER PARTS LIST			
18	051194	CYLINDER	1
19	051197	PISTON	1
20	051198	CYLINDER CAP	1
21	220170	SEAL KIT	1



POWER UNIT

THIS DRAWING IN ALL PARTICULARS IS WESCO INDUSTRIAL PRODUCTS INC. PROPERTY. ALL RIGHTS OF DESIGN, INVENTION OR USE OF ARE RESERVED.

PRINT ISSUED

June. 02, 2008

WESCO MANUFACTURING
ENGINEERING DEPARTMENT

REV. ECN & DATE APP	WESCO INDUSTRIAL PRODUCTS INC.	
	LANSDALE PENNA. 19446	
	PART NAME PESPL-60-3032	
	DRAWN: KL 08-07-01 CHECKED: PS 08-16-01	
TOLERANCE UNLESS OTHERWISE SPECIFIED		APP. ENGR.
FRACTION 3 PLACE DECIMAL 2 PLACE DECIMAL		SCALE: 1" = 20"
± 1/64 ± .005 ± .01		B-261025 REV
ANGULAR ± 1-1/2' SHEET 1 OF 2		
BREAK ALL SHARP EDGES AND REMOVE ALL BURRS		