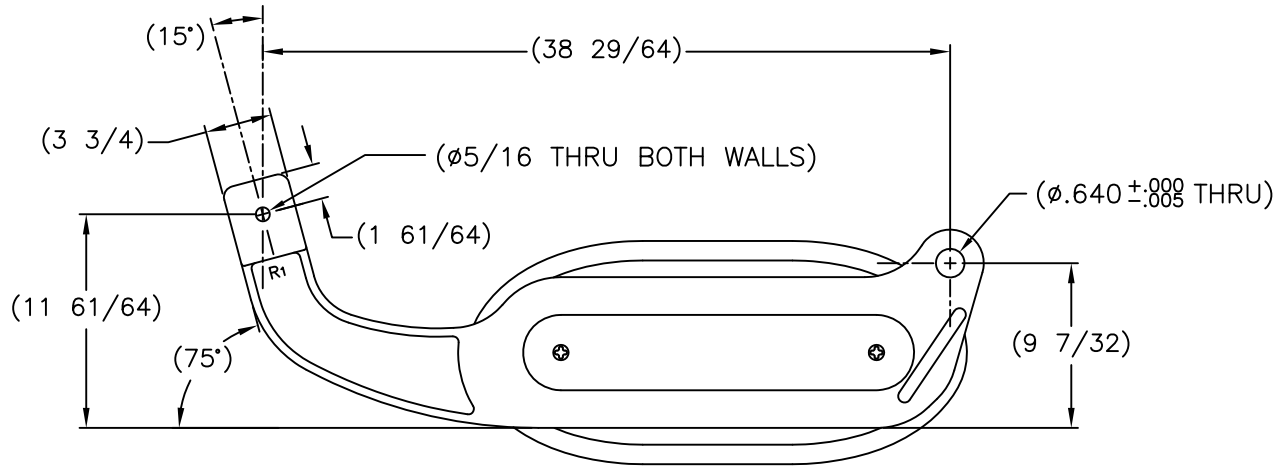
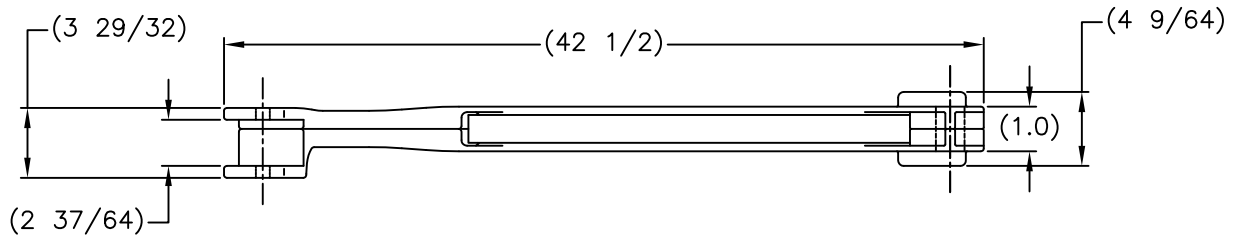


054237

REPLACEMENT PARTS LIST			
ITEM	PART NO.	DESCRIPTION	QTY.
1	108191	BOLT: CARRIAGE, 1/4-20 X 2"	2
2	108929	NUT: LOCK, HEX 1/4-20 W NYLOCK	2
3	108127	BAG: POLY (CLEAR) 4 X 5"	1
4	054518	RH STAIRCLIMBER W/ ROLLER	1
5	054519	LH STAIRCLIMBER W/ ROLLER	1
6	108873	ACCESSORY KIT	1



CAST ALUMINUM STAIRCLIMBER FOR COBRA-LITE

- Factory installed.
- Pair of stairclimbers with continuous rolling belt.
- Only available on hand trucks with 8" wheels

P/N 054237

Model S5F  
Weight 6 lbs

THIS DRAWING IN ALL PARTICULARS IS WESCO INDUSTRIAL PRODUCTS INC. PROPERTY. ALL RIGHTS OF DESIGN, INVENTION OR USE OF ARE RESERVED.

		REV	ECN & DATE	APP	<b>WESCO INDUSTRIAL PRODUCTS INC.</b> NORTH WALES PENNA. 19454	
		02-26-13			PART NAME <b>Aluminum Stairclimber</b>	
		NOTES UPDATED			DRAWN: CHECKED: APP. ENGR.	
					TOLERANCE UNLESS OTHERWISE SPECIFIED FRACTION 3 PLACE DECIMAL 2 PLACE DECIMAL ± 1/64 ± .005 ± .01	
					SCALE: ANGULAR ± 1-1/2' SHEET 1 OF 1	
		A			B- 054237 REV A BREAK ALL SHARP EDGES AND REMOVE ALL BURRS	